

AsphaSearch

Global & Local Literature Screening

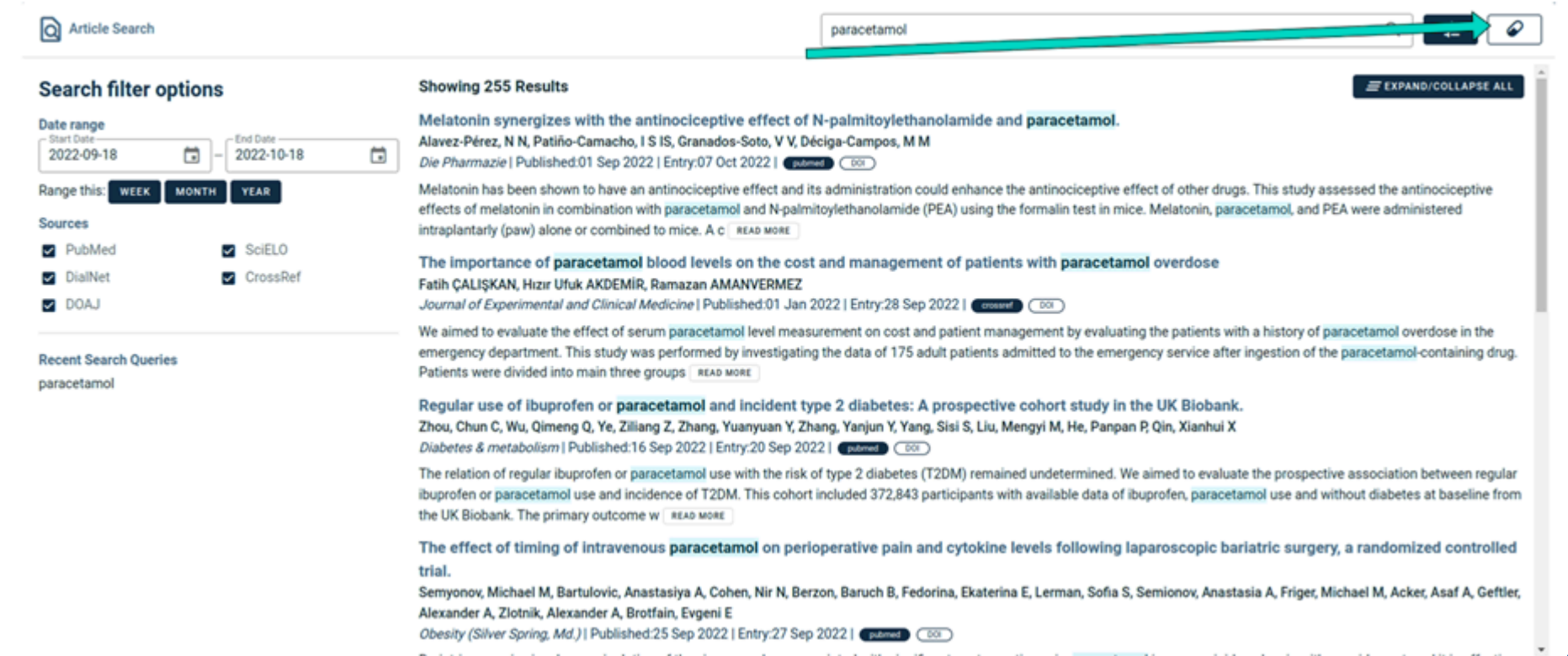


AsphaSearch
MEDICAL LITERATURE MONITORING

Validated, AI-assisted literature monitoring for PV and safety

AsphaSearch centralizes global and local literature surveillance in a single validated environment.

It automates search execution, deduplication, relevance checks and documentation—supporting efficient pharmacovigilance with high scientific rigor.



The screenshot displays the Aspha Search interface. At the top, there is a search bar with the query 'paracetamol' and a search button. Below the search bar, the interface is divided into two main sections: 'Search filter options' and 'Showing 255 Results'.

Search filter options:

- Date range:** Start Date: 2022-09-18, End Date: 2022-10-18.
- Range this:** WEEK, MONTH, YEAR (selected).
- Sources:** PubMed, DialNet, DOAJ, SciELO, CrossRef (all selected).
- Recent Search Queries:** paracetamol.

Showing 255 Results:

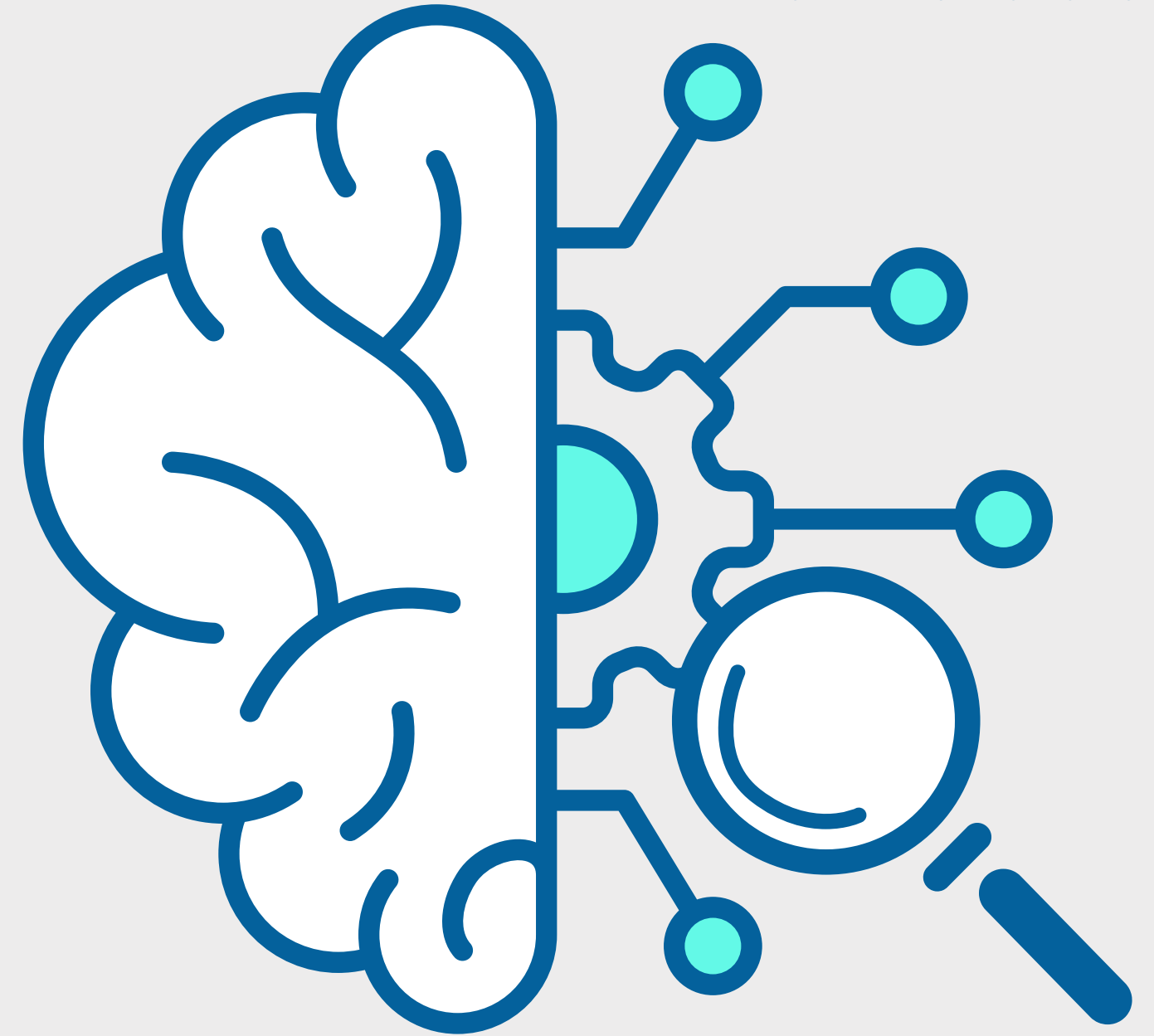
- Article 1:** Melatonin synergizes with the antinociceptive effect of N-palmitoylethanolamide and paracetamol. Alavez-Pérez, N N, Patiño-Camacho, I S IS, Granados-Soto, V V, Déciga-Campos, M M. *Die Pharmazie* | Published:01 Sep 2022 | Entry:07 Oct 2022 | PubMed | DOI. Abstract: Melatonin has been shown to have an antinociceptive effect and its administration could enhance the antinociceptive effect of other drugs. This study assessed the antinociceptive effects of melatonin in combination with paracetamol and N-palmitoylethanolamide (PEA) using the formalin test in mice. Melatonin, paracetamol, and PEA were administered intraplantarly (paw) alone or combined to mice. A C | READ MORE.
- Article 2:** The importance of paracetamol blood levels on the cost and management of patients with paracetamol overdose. Fatih ÇALIŞKAN, Hızır Ufuk AKDEMİR, Ramazan AMANVERMEZ. *Journal of Experimental and Clinical Medicine* | Published:01 Jan 2022 | Entry:28 Sep 2022 | Crossref | DOI. Abstract: We aimed to evaluate the effect of serum paracetamol level measurement on cost and patient management by evaluating the patients with a history of paracetamol overdose in the emergency department. This study was performed by investigating the data of 175 adult patients admitted to the emergency service after ingestion of the paracetamol-containing drug. Patients were divided into main three groups | READ MORE.
- Article 3:** Regular use of ibuprofen or paracetamol and incident type 2 diabetes: A prospective cohort study in the UK Biobank. Zhou, Chun C, Wu, Qimeng Q, Ye, Ziliang Z, Zhang, Yuanyuan Y, Zhang, Yanjun Y, Yang, Sisi S, Liu, Mengyi M, He, Panpan P, Qin, Xianhui X. *Diabetes & metabolism* | Published:16 Sep 2022 | Entry:20 Sep 2022 | PubMed | DOI. Abstract: The relation of regular ibuprofen or paracetamol use with the risk of type 2 diabetes (T2DM) remained undetermined. We aimed to evaluate the prospective association between regular ibuprofen or paracetamol use and incidence of T2DM. This cohort included 372,843 participants with available data of ibuprofen, paracetamol use and without diabetes at baseline from the UK Biobank. The primary outcome w | READ MORE.
- Article 4:** The effect of timing of intravenous paracetamol on perioperative pain and cytokine levels following laparoscopic bariatric surgery, a randomized controlled trial. Semyonov, Michael M, Bartulovic, Anastasiya A, Cohen, Nir N, Berzon, Baruch B, Fedorina, Ekaterina E, Lerman, Sofia S, Semionov, Anastasia A, Friger, Michael M, Acker, Asaf A, Gettler, Alexander A, Zlotnik, Alexander A, Brotfain, Evgeni E. *Obesity (Silver Spring, Md.)* | Published:25 Sep 2022 | Entry:27 Sep 2022 | PubMed | DOI.



Key Advantages

- **Successfully audited** and inspected by authorities.
- **AI-assisted searches** across global and local databases.
- **Reduced manual workload** and **lower risk** of oversight/errors.
- **Full traceability** and transparent documentation for audits.
- **Automated detection** of relevant safety events across sources.
- **Validated software** ensuring data integrity and compliance.
- **A single hub for comprehensive local literature searches** across 100+ countries

**Asphalion – your global digital partner
for tailored local literature searches.**



Literature Searches Procedure

Screening

Triaging a

Search in databases

Retrieve results

Duplicate check

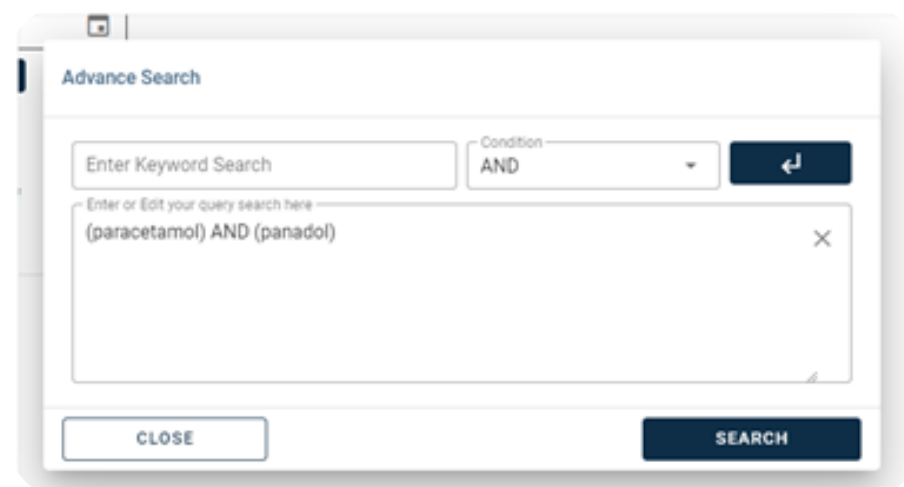
AI-powered filtering

Screen

Search in databases

We create the **search query** and select the most relevant literature **databases** and **local journals** for your search.

100% customizable search, based on type of product, territories, and journals.



Advance Search

Enter Keyword Search

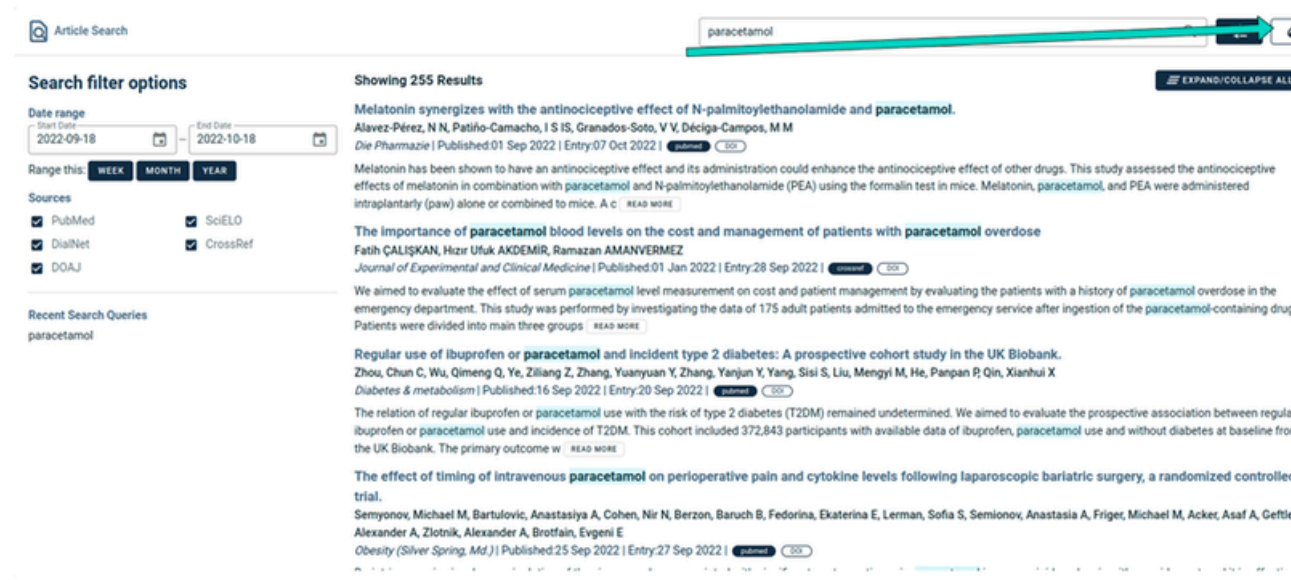
Condition: AND

Enter or Edit your query search here
(paracetamol) AND (panadol)

CLOSE SEARCH

Retrieve results

- **Automation: Possibility to define the frequency** at which results are produced (weekly, daily, or on demand).
- **User notification.**



Article Search

paracetamol

Showing 255 Results

Melatonin synergizes with the antinociceptive effect of N-palmitoylethanolamide and paracetamol. Alvarez-Pérez, N N, Patiño-Camacho, I S IS, Granados-Soto, V V, Déciga-Campos, M M Die Pharmazie | Published 01 Sep 2022 | Entry 07 Oct 2022

Melatonin has been shown to have an antinociceptive effect and its administration could enhance the antinociceptive effect of other drugs. This study assessed the antinociceptive effects of melatonin in combination with paracetamol and N-palmitoylethanolamide (PEA) using the formalin test in mice. Melatonin, paracetamol, and PEA were administered intraplantarly (paw) alone or combined to mice. A C

The importance of paracetamol blood levels on the cost and management of patients with paracetamol overdose Fath ÇALIŞKAN, Hzır Ufuk AKDEMİR, Ramazan AMANVERMEZ Journal of Experimental and Clinical Medicine | Published 01 Jan 2022 | Entry 28 Sep 2022

We aimed to evaluate the effect of serum paracetamol level measurement on cost and patient management by evaluating the patients with a history of paracetamol overdose in the emergency department. This study was performed by investigating the data of 175 adult patients admitted to the emergency service after ingestion of the paracetamol-containing drug. Patients were divided into main three groups

Regular use of ibuprofen or paracetamol and incident type 2 diabetes: A prospective cohort study in the UK Biobank. Zhou, Chan C, Wu, Qimeng Q, Ye, Ziliang Z, Zhang, Yuanyuan Y, Zhang, Yanjun Y, Yang, Sisi S, Liu, Mengyi M, He, Panpan P, Qin, Xianhui X Diabetes & metabolism | Published 16 Sep 2022 | Entry 20 Sep 2022

The relation of regular ibuprofen or paracetamol use with the risk of type 2 diabetes (T2DM) remained undetermined. We aimed to evaluate the prospective association between regular ibuprofen or paracetamol use and incidence of T2DM. This cohort included 372,843 participants with available data of ibuprofen, paracetamol use and without diabetes at baseline from the UK Biobank. The primary outcome w

The effect of timing of intravenous paracetamol on perioperative pain and cytokine levels following laparoscopic bariatric surgery, a randomized controlled trial. Semyonov, Michael M, Bartulovic, Anastasiya A, Cohen, Nir N, Berzon, Baruch B, Fedorina, Ekaterina E, Lerman, Sofia S, Semionov, Anastasia A, Friger, Michael M, Acker, Asaf A, Getfeler, Alexander A, Zlotnik, Alexander A, Broffain, Evgeni E Obesity (Silver Spring, Md.) | Published 25 Sep 2022 | Entry 27 Sep 2022



AI automatically discards irrelevant results



Literature Searches Procedure

Triaging and assesment

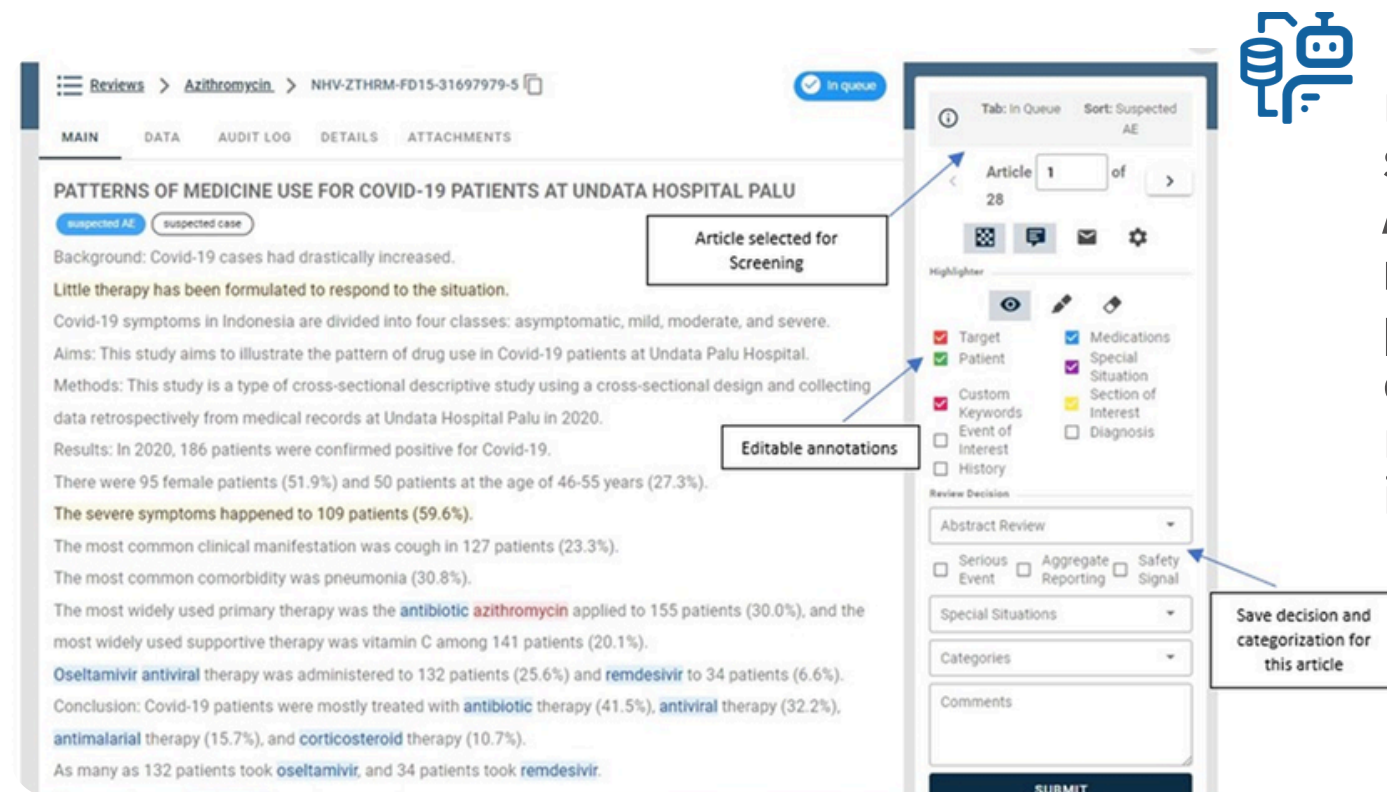
AI-powered filtering

Screen for adverse events and relevant safety data

Full text review

QC

AI powered filtering - Screen for adverse events and relevant safety data



Article selected for Screening

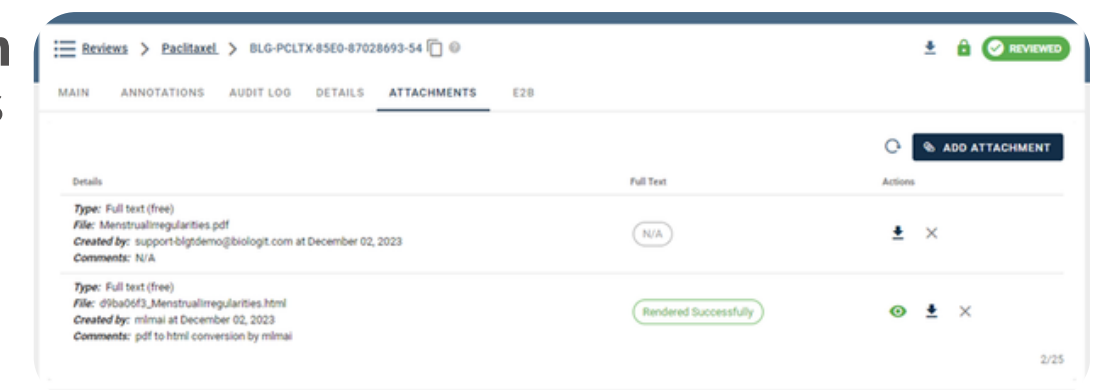
Editable annotations

Save decision and categorization for this article

Every citation retrieved by the software receives **AI tags representing predictions** that correspond to relevant safety information.

Full text review

Automatic translation of local journal articles into English and **detection of safety information**, even in low-quality sources.



Rendered Successfully

QC & Audit log

Timestamp	Created by	Status	Decision	Special Situations	Exclusions	User Comments
2021-03-04 20:17:22	bohana	Reviewed	Not ICSR		Study in-vitro	

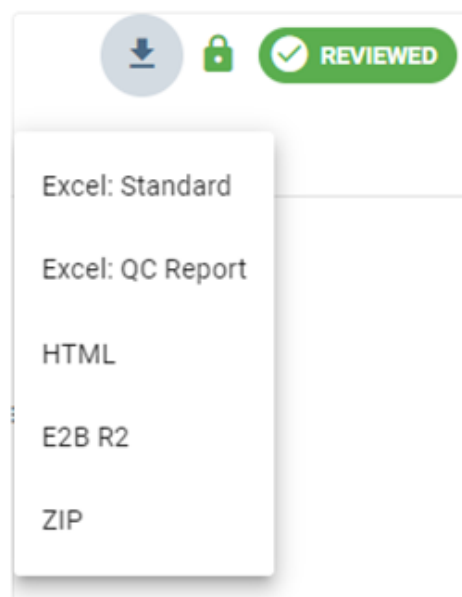


Literature Searches Procedure

Reporting

Export Literature Report

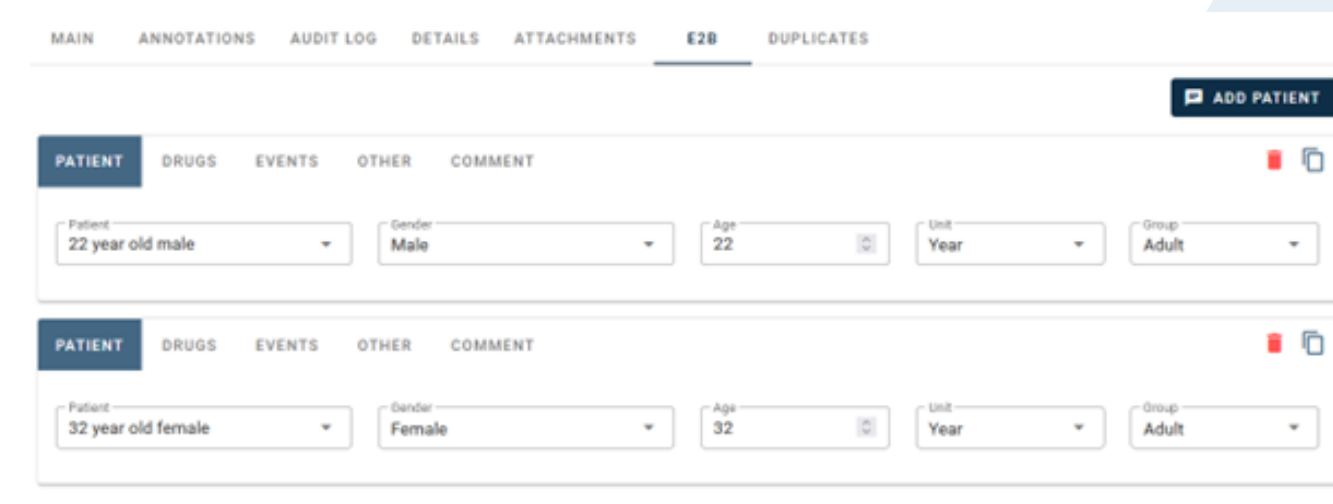
Export Literature Reports



- **Excel** containing article and assessment decision data.
- The **"QC" version** includes a column showing all recorded decisions for the article.
- **HTML** containing the article abstract and latest assessment decision (if any).
- **E2B** export in XML format.
- **ZIP**: all.

Direct XML retrieval for case processing!

Adverse reaction information can be extracted from the article for processing in a **safety database**.





AsphaSearch

MEDICAL LITERATURE MONITORING

Global & Local Literature Screening

Contact us:

info@asphalion.com
www.asphalion.com

